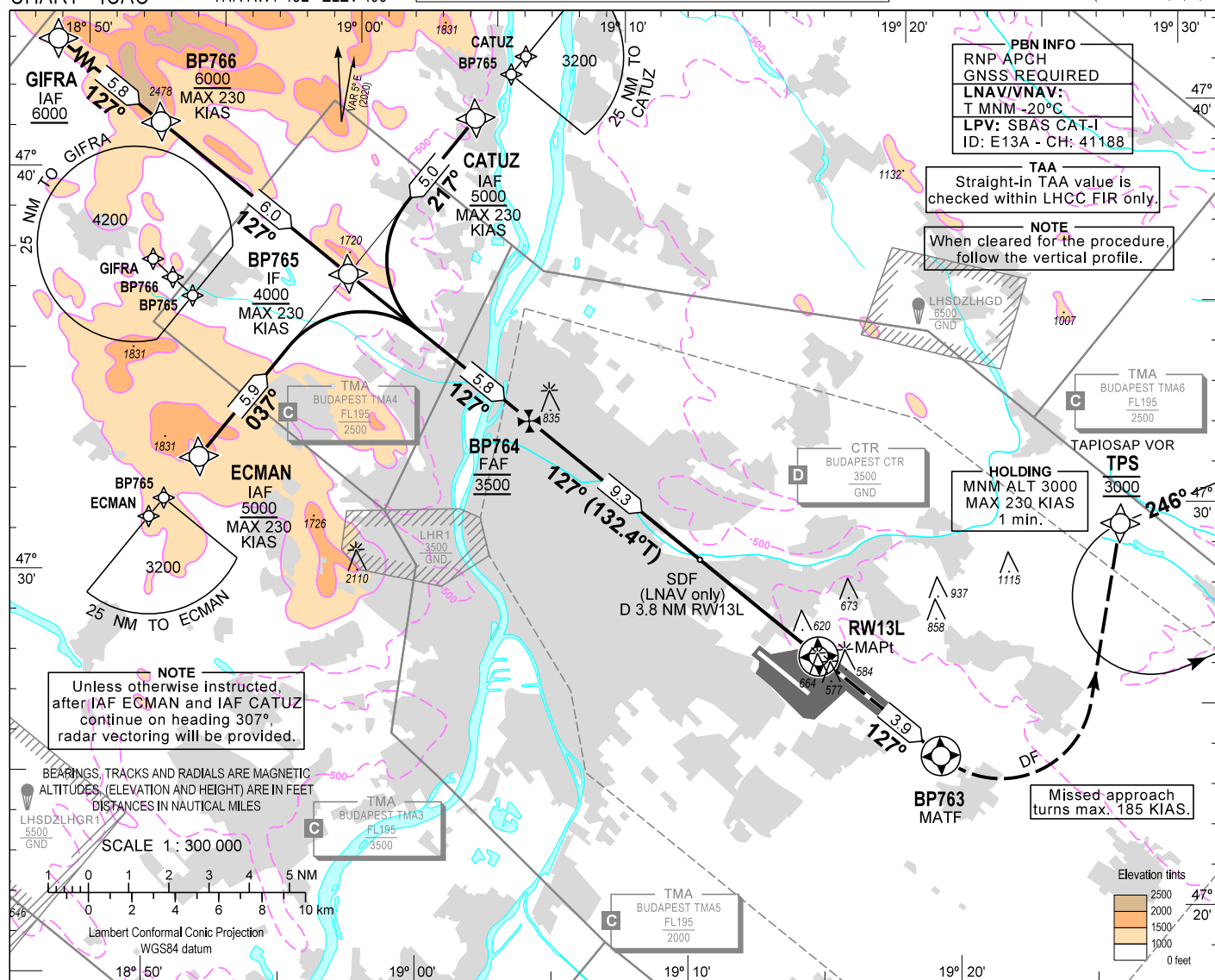


AIP HUNGARY

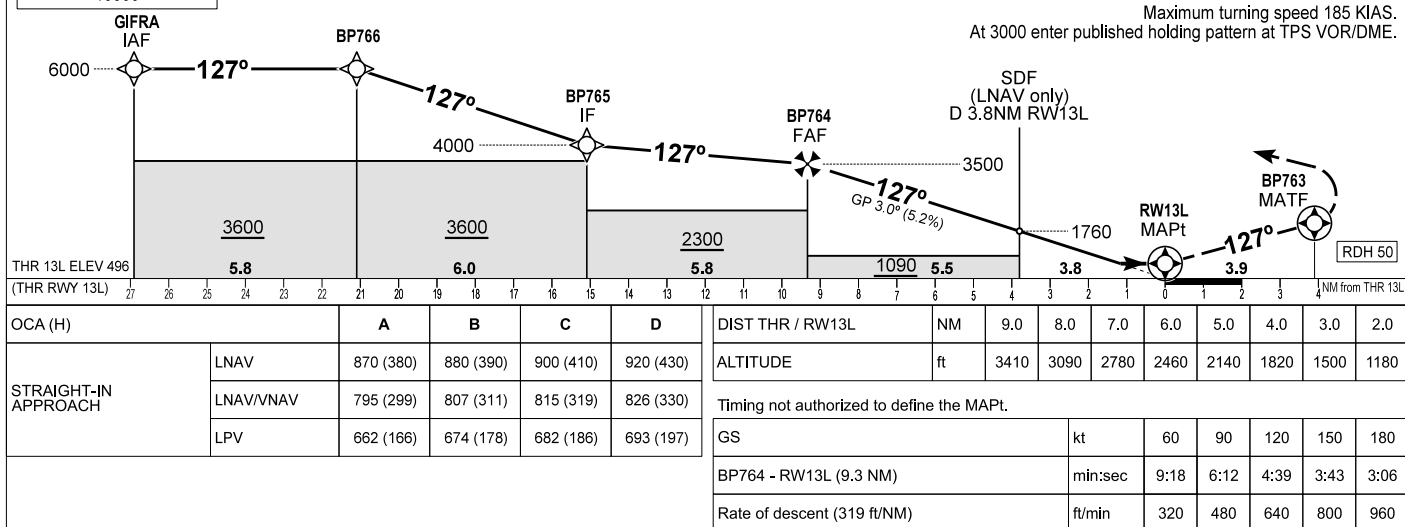
INSTRUMENT
APPROACH
CHART - ICAOAERODROME ELEV 496
HEIGHTS RELATED TO
THR RWY 13L - ELEV 496

BUDAPEST APP	122.980 123.860	BUDAPEST GROUND	121.905
BUDAPEST TOWER	118.715	BUDAPEST DELIVERY	134.540
BUDAPEST INFORMATION (NORTH)	119.350, (NORTH-EAST)	ATIS	132.380 (117.300)
			134.855

BUDAPEST/LISZT FERENC
RNP RWY 13L
(ACFT CAT A, B, C, D)TRANSITION ALTITUDE
10000

MISSED APPROACH

Climb to BP763.
At BP763 turn left direct to TPS and continue climb to 3000.
Maximum turning speed 185 KIAS.
At 3000 enter published holding pattern at TPS VOR/DME.



CHANGE: radio communication frequencies

OCA (H)		A	B	C	D	DIST THR / RW13L		NM	9.0	8.0	7.0	6.0	5.0	4.0	3.0	2.0
STRAIGHT-IN APPROACH	LNAV	870 (380)	880 (390)	900 (410)	920 (430)	ALTITUDE		ft	3410	3090	2780	2460	2140	1820	1500	1180
	LNAV/VNAV	795 (299)	807 (311)	815 (319)	826 (330)	Timing not authorized to define the MAPt.										
	LPV	662 (166)	674 (178)	682 (186)	693 (197)	GS		kt	60	90	120	150	180			
		BP764 - RW13L (9.3 NM)						min:sec	9:18	6:12	4:39	3:43	3:06			
		Rate of descent (319 ft/NM)						ft/min	320	480	640	800	960			

AD 2 LHBP INSTRUMENT APPROACH CHART RNP RWY 13L

via GIFRA

PT	WP ID	Role	OverFly	Bearing/ (Len Dur)	Turn Direction	Altitude (FT)	IAS (KT)	VRT ANG	NAV PERF
IF	GIFRA	IAF				+6000			RNP APCH
TF	BP766			132.1 T/5.8 NM		+6000	-230		RNP APCH
TF	BP765	IF		132.2 T/6.0 NM		+4000	-230		RNP APCH
TF	BP764	FAF		132.2 T/5.8 NM		@3500			RNP APCH
TF	RW13L	MAPt	Y	132.4 T/9.3 NM		+546		-3.0	RNP APCH
TF	BP763	MATF	Y	132.4 T/3.9 NM			-185		RNP APCH
DF	TPS				L	@3000	-185		RNP APCH
HM	TPS	MAHF		251.0 T/1 min	L	@3000	-230		RNP APCH

via ECMAN

PT	WP ID	Role	OverFly	Bearing/ (Len Dur)	Turn Direction	Altitude (FT)	IAS (KT)	VRT ANG	NAV PERF
IF	ECMAN	IAF				+5000	-230		RNP APCH
TF	BP765	IF		042.3 T/5.9 NM		+4000	-230		RNP APCH
TF	BP764	FAF		132.2 T/5.8 NM		@3500			RNP APCH
TF	RW13L	MAPt	Y	132.4 T/9.3 NM		+546		-3.0	RNP APCH
TF	BP763	MATF	Y	132.4 T/3.9 NM			-185		RNP APCH
DF	TPS				L	@3000	-185		RNP APCH
HM	TPS	MAHF		251.0 T/1 min	L	@3000	-230		RNP APCH

via CATUZ

PT	WP ID	Role	OverFly	Bearing/ (Len Dur)	Turn Direction	Altitude (FT)	IAS (KT)	VRT ANG	NAV PERF
IF	CATUZ	IAF				+5000	-230		RNP APCH
TF	BP765	IF		222.3T/5.0 NM		+4000	-230		RNP APCH
TF	BP764	FAF		132.2 T/5.8 NM		@3500			RNP APCH
TF	RW13L	MAPt	Y	132.4 T/9.3 NM		+546		-3.0	RNP APCH
TF	BP763	MATF	Y	132.4 T/3.9 NM			-185		RNP APCH
DF	TPS				L	@3000	-185		RNP APCH
HM	TPS	MAHF		251.0 T/1 min	L	@3000	-230		RNP APCH

SBAS FAS Data Block Coding Data

WAYPOINT COORDINATES SEE: AD 2.22.

FAS-DB (CRC wrapped data)	
Operation type	0
SBAS provider ID	1
Airport identifier	LHBP
RWY	13L
Approach performance designator	0
Route indicator	
Reference path data selector	0
Reference path identifier	E13A
LTP/FTP latitude	472643.5200N
LTP/FTP longitude	0191527.1800E
LTP/FTP ellipsoidal height (m)	195.3
FPAP latitude	472521.5520N
FPAP longitude	0191739.6190E
Threshold crossing height (TCH)	15
TCH units	1
Glide path angle (degrees)	3.00
Course width at threshold (m)	105.00
Length offset (m)	56
Horizontal alert limit (m)	40.0
Vertical alert limit (m)	35.0
Computed Data Block	10 10 02 08 0C CD 00 00 01 33 31 05 80 82 5C 14 98 B2 43 08 A1 1B A0 7F FD AE 0A 04 2C 81 2C 01 64 07 C8 AF B7 29 71 10
Computed CRC	B7297110
FAS-DB (not CRC wrapped)	
ICAO code	LH
LTP/FTP Orthometric height (m)	151.3